



LG Air Conditioner

SVC MANUAL(Exploded View)

Type: Ceiling Concealed Duct(Low Static)

**MODEL : ABNH09GL1A2 [CB09L N12 / CB09L N12A0]
ABNH12GL2A2 [CB12L N22 / CB12L N22A0]
ABNH18GL2A2 [CB18L N22 / CB18L N22A0]
ABNH24GL3A2 [CB24L N32 / CB24L N32A0]**

CAUTION

Before Servicing the unit, read the safety precautions in General SVC manual.
Only for authorized service personnel.

1. Specification

Indoor

Model Name				ABNH09GL1A2 [CB09L N12 / CB09L N12A0]	ABNH12GL2A2 [CB12L N22 / CB12L N22A0]	
Power Supply			V / Ø / Hz	220-240 / 1 / 50	220-240 / 1 / 50	
Dimensions	Body	W x H x D	mm	700 x 190 x 700	900 x 190 x 700	
		W x H x D	inch	27-9/16 x 7-15/32 x 27-9/16	35-7/16 x 7-15/32 x 27-9/16	
Net Weight	Body		kg (lbs)	17.5 (38.6)	23.0 (50.7)	
Heat Exchanger	(Row x Column x Fins per inch) x No.		-	(2 x 11 x 14) x 1	(2 x 11 x 18) x 1	
	Face Area		m ² (ft ²)	0.12 (1.32)	0.17 (1.81)	
Fan	Type		-	Sirocco Fan	Sirocco Fan	
	Air Flow Rate	High-static Mode (Factory Set)	H / M / L	m ³ /min	9.0 / 7.0 / 5.5	10.0 / 8.5 / 7.0
			H / M / L	ft ³ /min	318 / 247 / 194	353 / 300 / 247
	External Static Pressure		Pa (mmAq)	25.0 (2.54)	25.0 (2.54)	
Fan Motor	Type		-	BLDC	BLDC	
	Output		W x No.	19 x 1	19 x 1, 5 x 1	
Dehumidification Rate			l/h (pts/h)	1.1 (2.3)	1.2 (2.6)	
Sound Pressure Level		H / M / L	dB(A)	30 / 26 / 23	31 / 28 / 27	
Sound Power Level		Max.	dB(A)	49	52	
Piping Connections	Liquid		mm(inch)	Ø 6.35 (1/4)	Ø 6.35 (1/4)	
	Gas		mm(inch)	Ø 9.52 (3/8)	Ø 9.52 (3/8)	
	Drain (O.D. / I.D.)		mm(inch)	Ø 32.0(1-1/4) / 25.0(31/32)	Ø 32.0(1-1/4) / 25.0(31/32)	
Safety Devices			-	Fuse	Fuse	
			-	-	-	
Power and Communication Cable (included Earth)			No. x mm ² (AWG)	4C x 0.75 (18)	4C x 0.75 (18)	

Note:

1. Wiring cable size must comply with the applicable local and national code.
2. Due to our policy of innovation some specifications may be changed without notification.
3. Sound Level Values are measured at Anechoic chamber.
Therefore, these values can be increased(maximum 3dB(A)) owing to ambient conditions during operation.

Conversion Formula
kW = Btu/h x 0.0002931
cfm = CMM x 35.3

Model Name				ABNH18GL2A2 [CB18L N22 / CB18L N22A0]	ABNH24GL3A2 [CB24L N32 / CB24L N32A0]	
Power Supply			V / Ø / Hz	220-240 / 1 / 50	220-240 / 1 / 50	
Dimensions	Body	W x H x D	mm	900 x 190 x 700	1100 x 190 x 700	
		W x H x D	inch	35-7/16 x 7-15/32 x 27-9/16	43-5/16 x 7-15/32 x 27-9/16	
Net Weight	Body		kg (lbs)	23.0 (50.7)	27.0 (59.5)	
Heat Exchanger	(Row x Column x Fins per inch) x No.		-	(2 x 11 x 18) x 1	(3 x 11 x 18) x 1	
	Face Area		m ² (ft ²)	0.17 (1.81)	0.21 (2.31)	
Fan	Type		-	Sirocco Fan	Sirocco Fan	
	Air Flow Rate	High-static Mode (Factory Set)	H / M / L	m ³ /min	15.0 / 12.5 / 10.0	20.0 / 16.0 / 12.0
			H / M / L	ft ³ /min	530 / 441 / 353	706 / 565 / 424
	External Static Pressure		Pa (mmAq)	25.0 (2.54)	25.0 (2.54)	
Fan Motor	Type		-	BLDC	BLDC	
	Output		W x No.	19 x 1, 5 x 1	19 x 2	
Dehumidification Rate			l/h (pts/h)	1.7 (3.6)	2.2 (4.7)	
Sound Pressure Level		H / M / L	dB(A)	36 / 34 / 31	39 / 35 / 32	
Sound Power Level		Max.	dB(A)	54	58	
Piping Connections	Liquid		mm(inch)	Ø 6.35 (1/4)	Ø 9.52 (3/8)	
	Gas		mm(inch)	Ø 12.7 (1/2)	Ø 15.88 (5/8)	
	Drain (O.D. / I.D.)		mm(inch)	Ø 32.0(1-1/4) / 25.0(31/32)	Ø 32.0(1-1/4) / 25.0(31/32)	
Safety Devices			-	Fuse	Fuse	
			-	-	-	
Power and Communication Cable (included Earth)			No. x mm ² (AWG)	4C x 0.75 (18)	4C x 0.75 (18)	

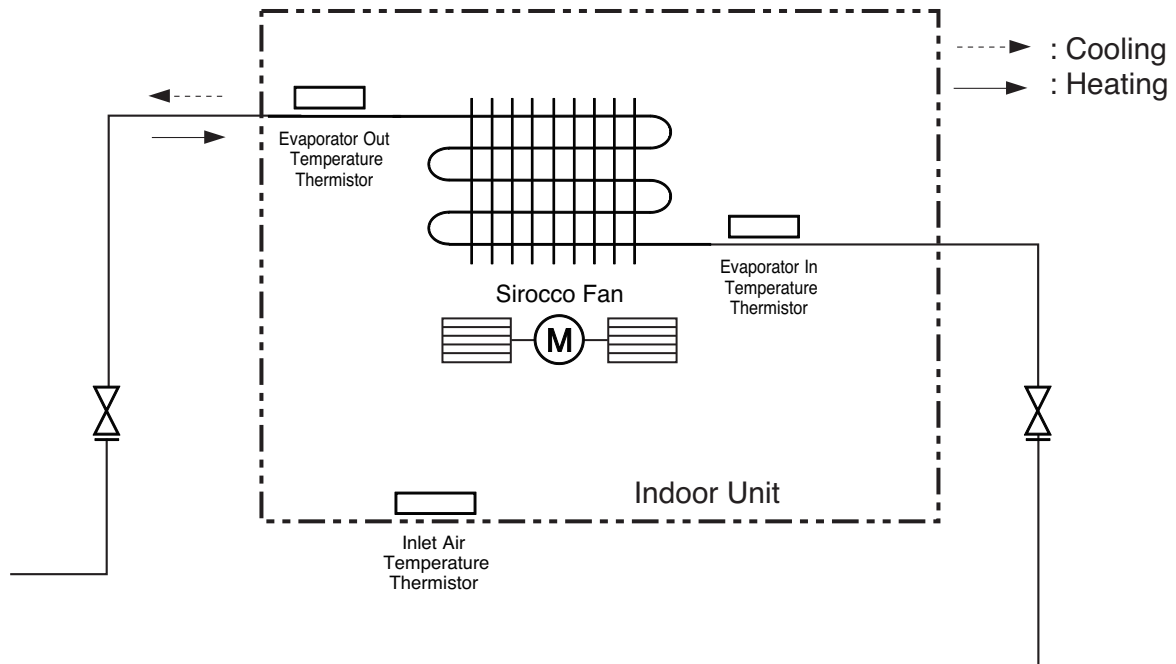
Note:

1. Wiring cable size must comply with the applicable local and national code.
2. Due to our policy of innovation some specifications may be changed without notification.
3. Sound Level Values are measured at Anechoic chamber.
Therefore, these values can be increased(maximum 3dB(A)) owing to ambient conditions during operation.

Conversion Formula
kW = Btu/h x 0.0002931
cfm = CMM x 35.3

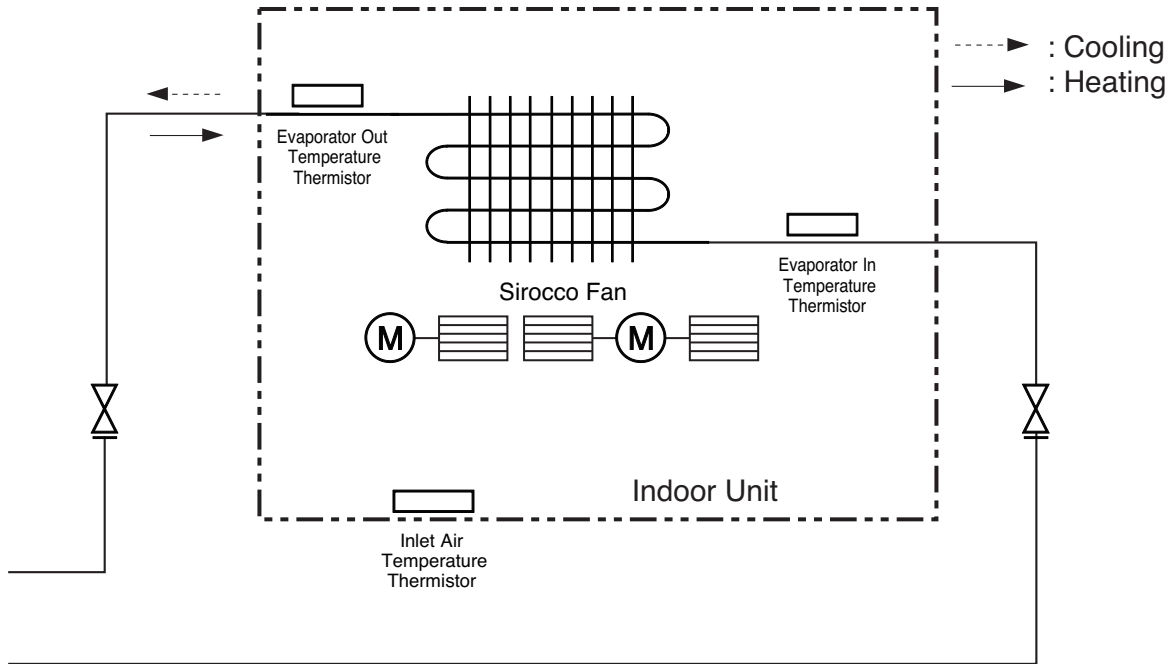
2. Piping Diagrams

Model : ABNH09GL1A2 [CB09L N12 / CB09L N12A0]



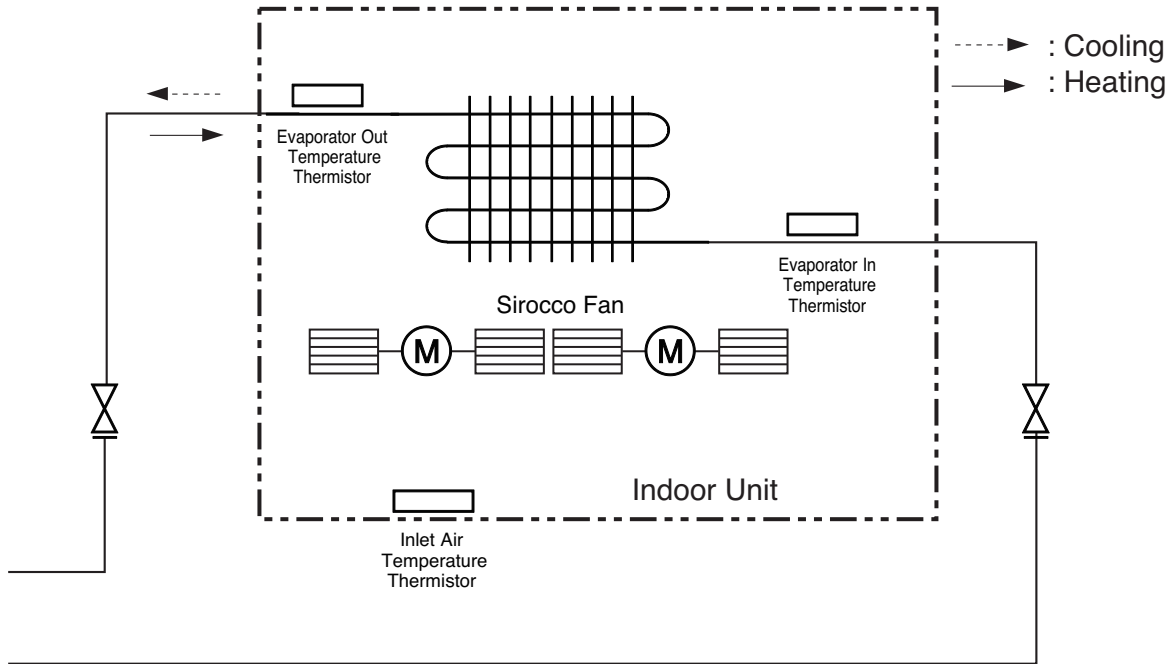
Description	PCB Connector
Inlet Air Temperature Thermistor	CN-ROOM
Evaporator In Temperature Thermistor	CN-PIPE/IN
Evaporator Out Temperature Thermistor	CN-PIPE/OUT

Model : ABNH12GL2A2 [CB12L N22 / CB12L N22A0], ABNH18GL2A2 [CB18L N22 / CB18L N22A0]



Description	PCB Connector
Inlet Air Temperature Thermistor	CN-ROOM
Evaporator In Temperature Thermistor	CN-PIPE/IN
Evaporator Out Temperature Thermistor	CN-PIPE/OUT

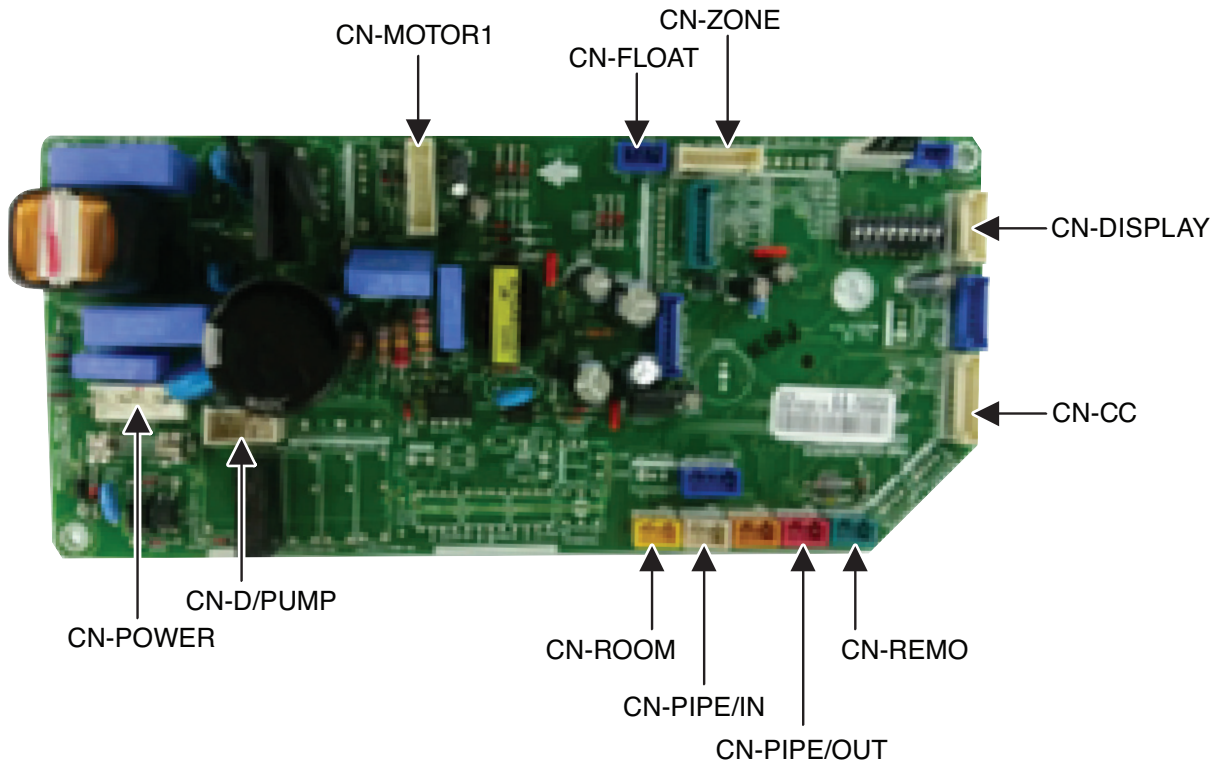
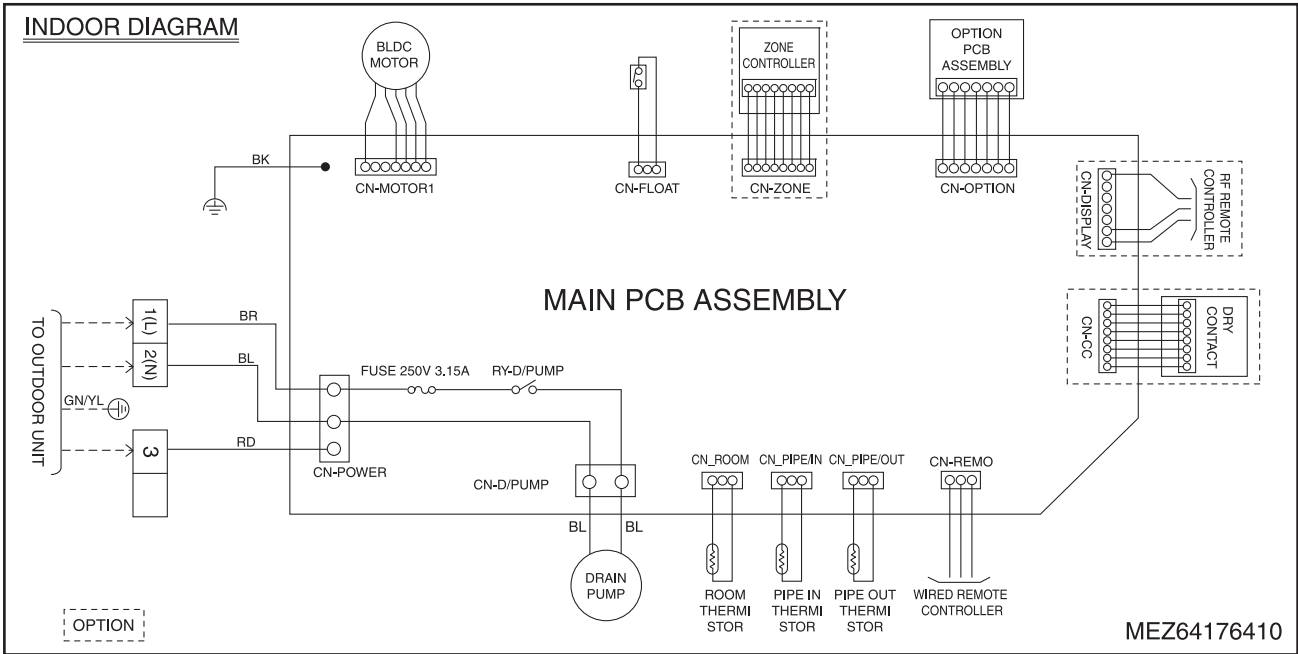
Model : ABNH24GL3A2 [CB24L N32 / CB24L N32A0]



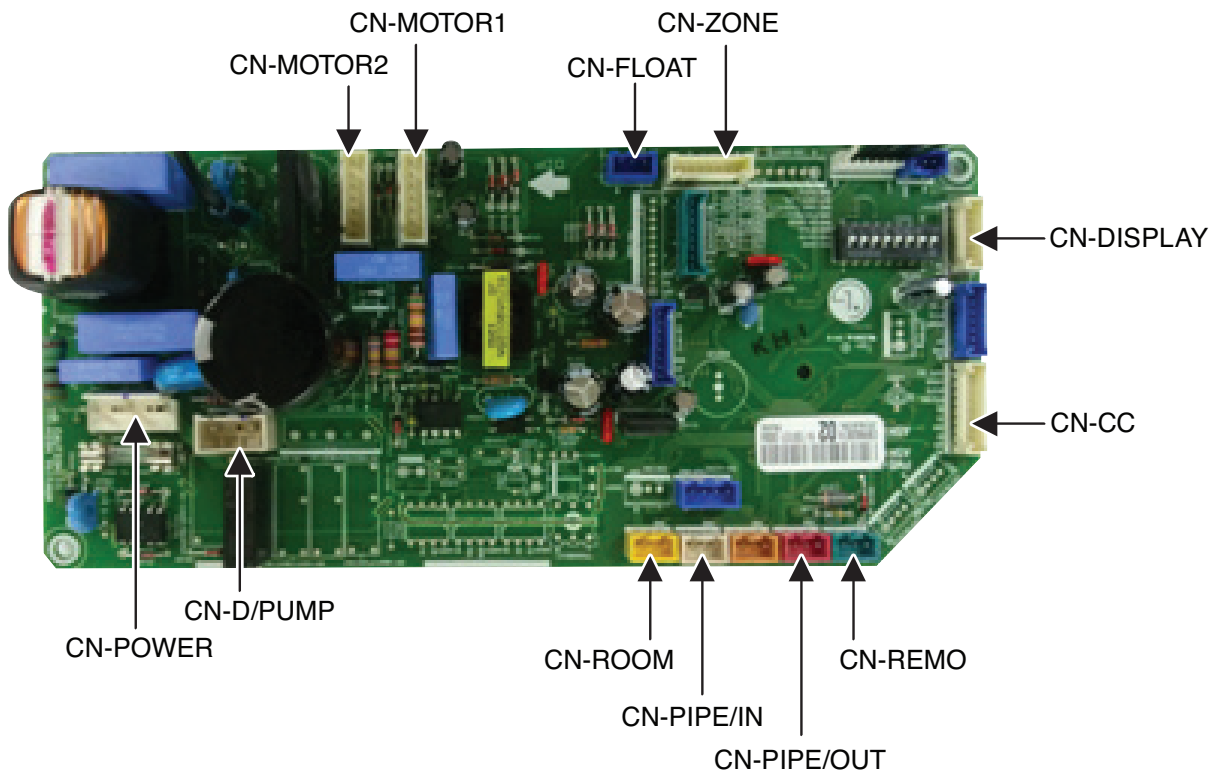
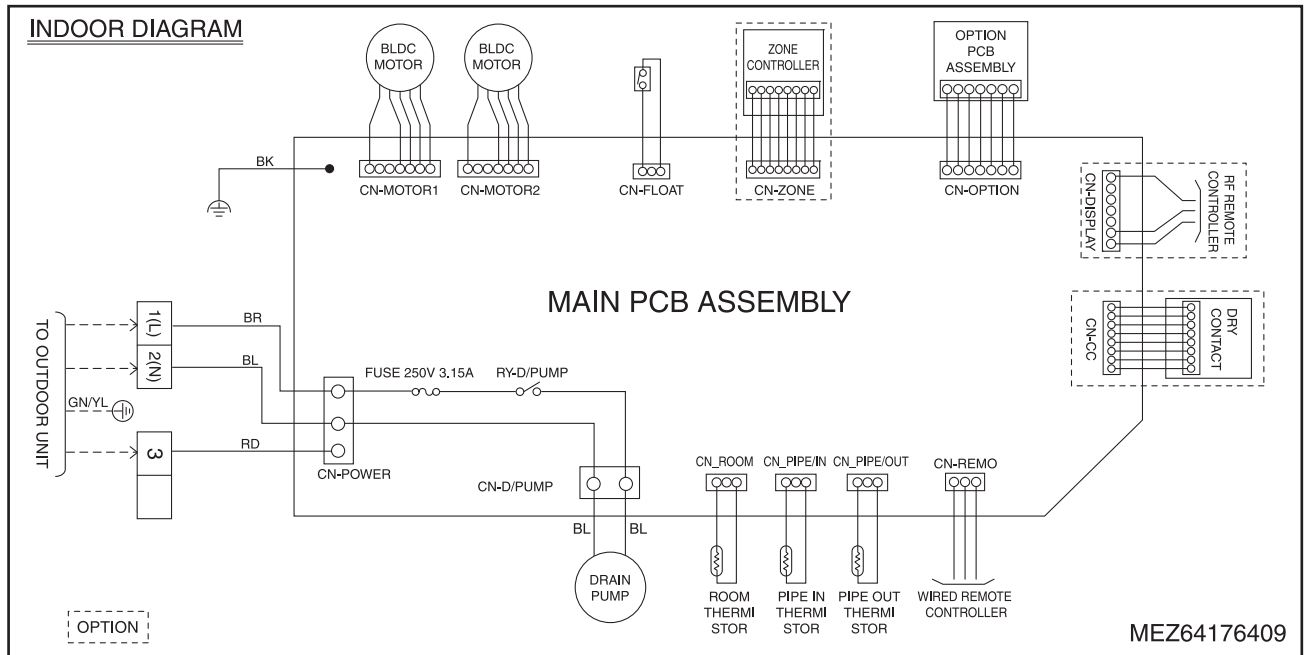
Description	PCB Connector
Inlet Air Temperature Thermistor	CN-ROOM
Evaporator In Temperature Thermistor	CN-PIPE/IN
Evaporator Out Temperature Thermistor	CN-PIPE/OUT

3. Wiring Diagrams

L1 Chassis

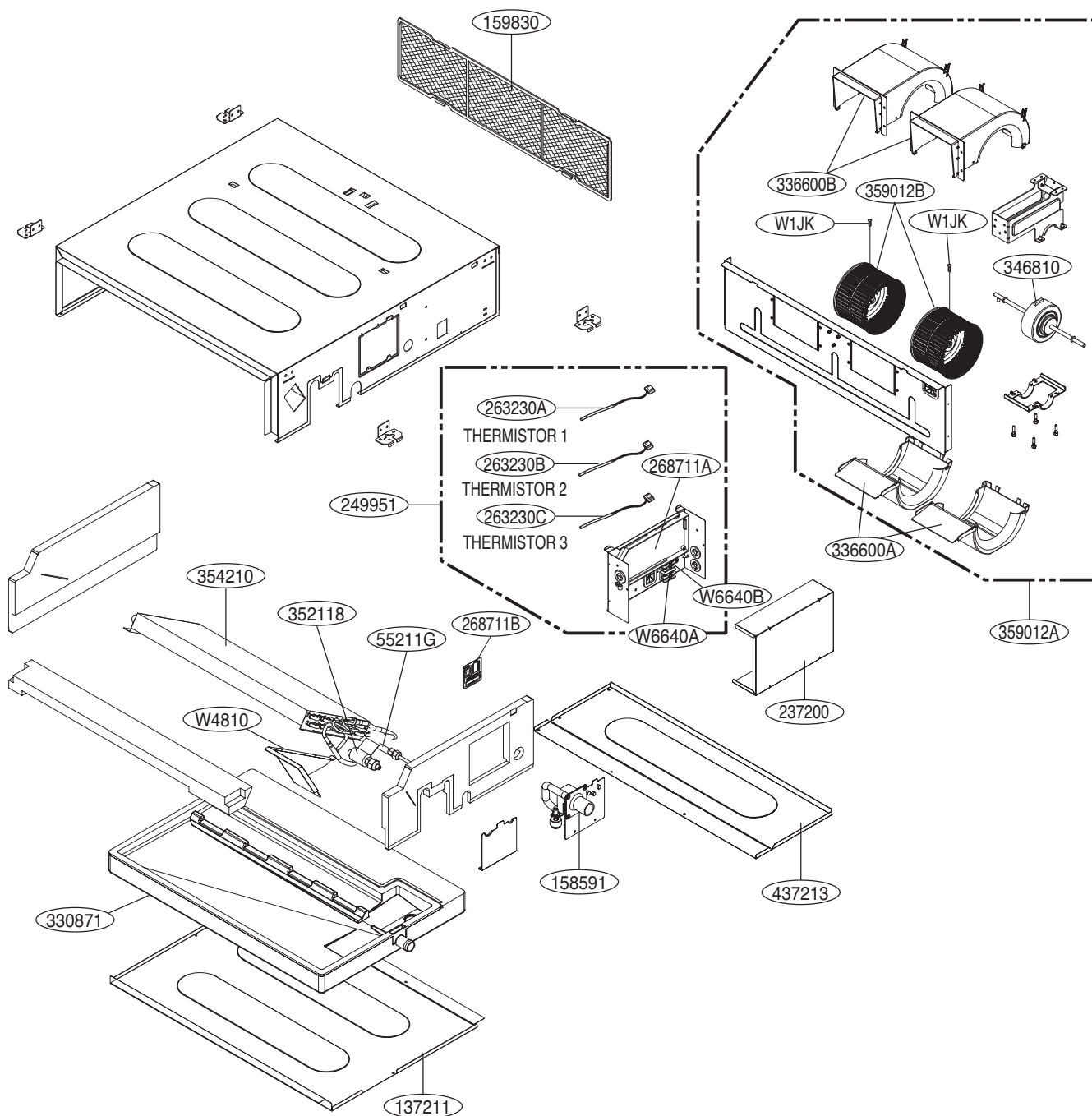


L2/L3 Chassis



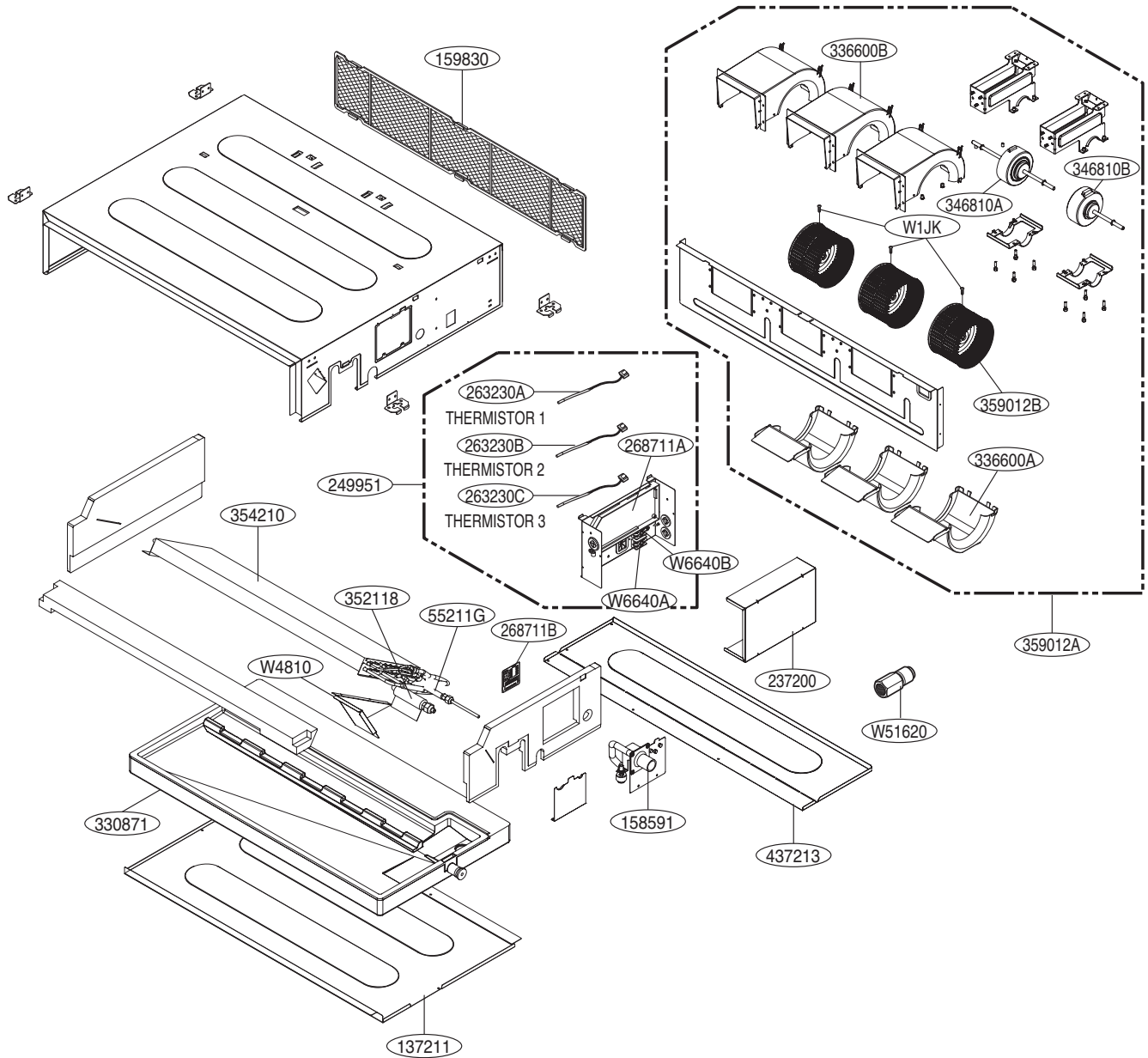
4. Exploded View

L1 Chassis



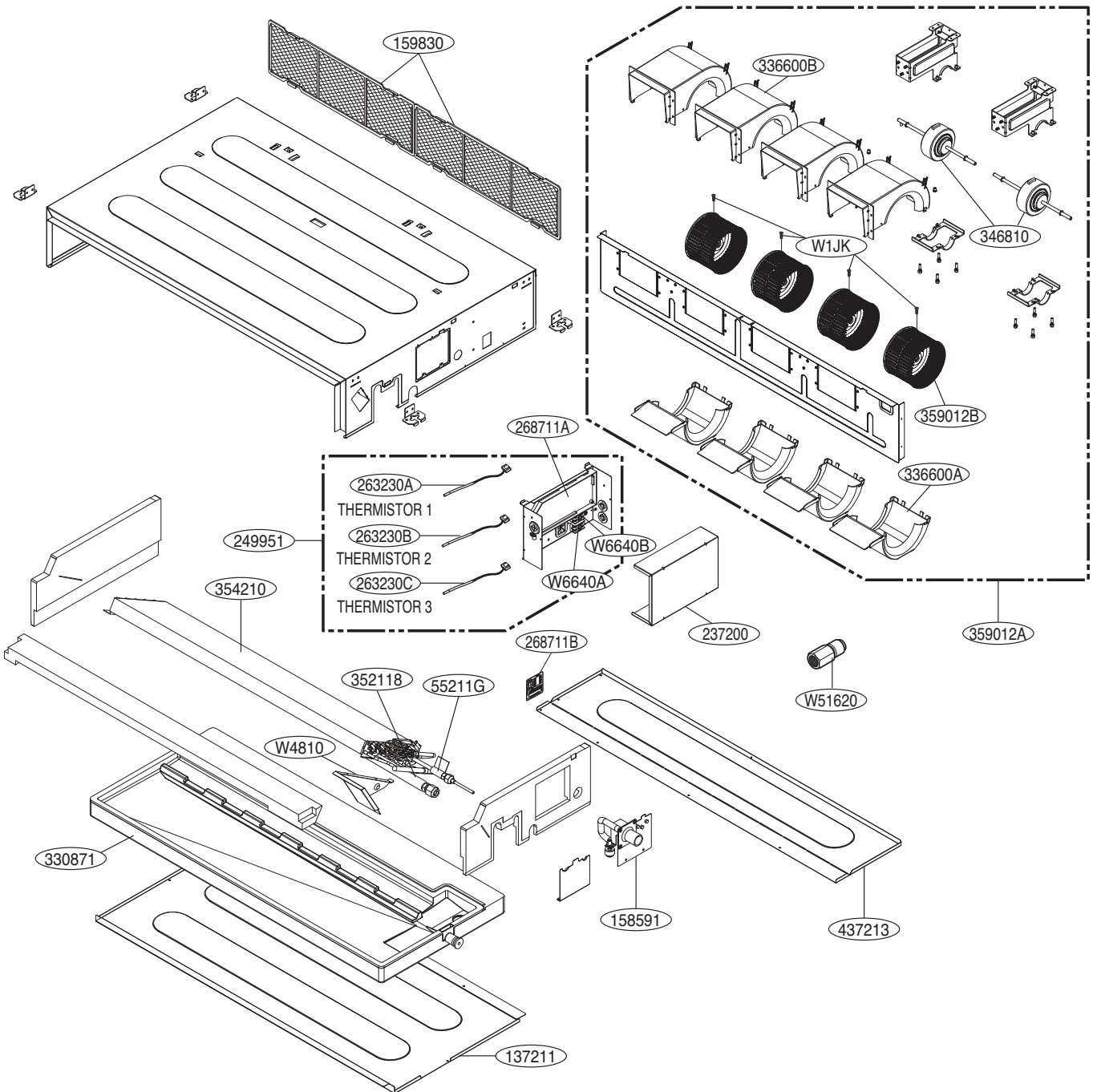
Thermistor 1	263230A	Air	Housing color : yellow
Thermistor 2	263230B	Eva. in	Housing color : white
Thermistor 3	263230C	Eva. out	Housing color : red

L2 Chassis



Thermistor 1	263230A	Air	Housing color : yellow
Thermistor 2	263230B	Eva. in	Housing color : white
Thermistor 3	263230C	Eva. out	Housing color : red

L3 Chassis



Thermistor 1	263230A	Air	Housing color : yellow
Thermistor 2	263230B	Eva. in	Housing color : white
Thermistor 3	263230C	Eva. out	Housing color : red

Note) * Please ensure GCSC since the replacement parts may be changed depending upon the buyer's request.
 Please check the correct parts in View RPL(Replacement Part List) on GCGS.
 (GCGS Website <http://biz.Lgservice.com>)



P/NO : MFL67642602

November, 2014