



LG Air Conditioner

SVC MANUAL(Exploded View)

Type: Cassette Air Conditioner

**MODEL : ATNH24GPLE2 [CT24 NP2 / CT24 NP2A0]
ATNH30GPLE2 [UT30 NP2], ATNH36GNLE2 [UT36 NN2]
ATNH42GMLE2 [UT42 NM2], ATNH48GMLE2 [UT48 NM2]
ATNH60GMLE2 [UT60 NM2]**

CAUTION

Before Servicing the unit, read the safety precautions in General SVC manual.
Only for authorized service personnel.

1. Specification

Indoor

Model Name			ATNH24GPLE2 [CT24 NP2 / CT24 NP2A0]	ATNH30GPLE2 [UT30 NP2]	ATNH36GNLE2 [UT36 NN2]
Power Supply			V / Ø / Hz	220-240 / 1 / 50	220-240 / 1 / 50
Casing Color			-	-	-
Dimensions	Body	W x H x D	mm	204 x 840 x 840	204 x 840 x 840
		W x H x D	inch	8-1/32 x 33-1/16 x 33-1/16	8-1/32 x 33-1/16 x 33-1/16
Net Weight	Body	kg (lbs)	20.5 (45.2)	20.5 (45.2)	22.3 (49.2)
Heat Exchanger	#1_(Row x Column x Fins per inch) x No.		-	(1 x 8 x 19) x 1	(1 x 10 x 19) x 1
	#2_(Row x Column x Fins per inch) x No.		-	(1 x 8 x 19) x 1	(1 x 10 x 19) x 1
	Face Area		m ² (ft ²)	0.168 (1.81)	0.168 (1.81)
Fan	Type		-	Turbo Fan	Turbo Fan
	Air Flow Rate	H / M / L	m ³ /min	17.0 / 15.0 / 13.0	19.0 / 17.0 / 15.0
		H / M / L	ft ³ /min	600 / 530 / 459	671 / 600 / 530
Fan Motor	Type		-	BLDC	BLDC
	Output		W x No.	60 x 1	60 x 1
	Power Input		W x No.	-	-
	Running Current		A	0.60 x 1	0.60 x 1
Dehumidification Rate			l / h (pts/h)	2.4 (5.1)	2.5 (5.3)
Sound Pressure Level		H / M / L	dB(A)	38 / 36 / 34	40 / 37 / 35
Sound Power Level	Cooling	H / M / L	dB(A)	-	-
Piping Connections	Liquid		mm(inch)	Ø 9.52 (3/8)	Ø 9.52 (3/8)
	Gas		mm(inch)	Ø 15.88 (5/8)	Ø 15.88 (5/8)
	Drain (O.D. / I.D.)		mm	Ø 32.0 / 25.5	Ø 32.0 / 25.5
Safety Devices			-	Fuse	Fuse
Power and Communication Cable (included Earth)			No. x mm ² (AWG)	4C x 0.75 (18)	4C x 0.75 (18)
Decoration Panel	Model Name		-	PT-UMC	PT-UMC
	Casing Color		-	Morning Fog	Morning Fog
	Dimensions	W x H x D	mm	22 x 950 x 950	22 x 950 x 950
		W x H x D	inch	7/8 x 37-13/32 x 37-13/32	7/8 x 37-13/32 x 37-13/32
	Net weight		kg (lbs)	5 (11.0)	5 (11.0)

Note:

1. All data are based on the following conditions:

- Cooling Temperature : Indoor 27°C(80.6°F) DB / 19°C(66.2°F) WB
Outdoor 35°C(95°F) DB / 24°C(75.2°F) WB
- Heating Temperature : Indoor 20°C(68°F) DB / 15°C(59°F) WB
Outdoor 7°C(44.6°F) DB / 6°C(42.8°F) WB
- Piping Length : Interconnected Pipe Length = 7.5m
- Difference Limit of Elevation (Outdoor ~ Indoor Unit) is Zero.

2. Wiring cable size must comply with the applicable local and national code.

3. Due to our policy of innovation some specifications may be changed without notification.

4. Sound Level Values are measured at Anechoic chamber.

Therefore, these values can be increased(maximum 3dB(A)) owing to ambient conditions during operation.

Conversion Formula
kW = Btu/h x 0.0002931
cfm = CMM x 35.3

Model Name			ATNH42GMLE2 [UT42 NM2]	ATNH48GMLE2 [UT48 NM2]	ATNH60GMLE2 [UT60 NM2]	
Power Supply			V / Ø / Hz	220-240 / 1 / 50	220-240 / 1 / 50	220-240 / 1 / 50
Casing Color			-	-	-	-
Dimensions	Body	W x H x D	mm	288 x 840 x 840	288 x 840 x 840	288 x 840 x 840
		W x H x D	inch	11-11/32 x 33-1/16 x 33-1/16	11-11/32 x 33-1/16 x 33-1/16	11-11/32 x 33-1/16 x 33-1/16
Net Weight	Body		kg (lbs)	24.6 (54.2)	24.6 (54.2)	24.6 (54.2)
Heat Exchanger	#1_(Row x Column x Fins per inch) x No.		-	(1 x 12 x 21) x 1	(1 x 12 x 21) x 1	(1 x 12 x 21) x 1
	#2_(Row x Column x Fins per inch) x No.		-	(1 x 12 x 21) x 1	(1 x 12 x 21) x 1	(1 x 12 x 21) x 1
	Face Area		m ² (ft ²)	0.252 (2.71)	0.252 (2.71)	0.252 (2.71)
Fan	Type		-	Turbo Fan	Turbo Fan	Turbo Fan
	Air Flow Rate	H / M / L	m ² /min	30.0 / 28.0 / 26.0	34.0 / 32.0 / 30.0	34.0 / 32.0 / 30.0
		H / M / L	ft ² /min	1,060 / 989 / 918	1,201 / 1,130 / 1,060	1,201 / 1,130 / 1,060
Fan Motor	Type		-	BLDC	BLDC	BLDC
	Output		W x No.	124 x 1	124 x 1	124 x 1
	Power Input		W x No.	-	-	-
	Running Current		A	0.72 x 1	0.72 x 1	0.72 x 1
Dehumidification Rate			l / h (pts/h)	3.6 (7.7)	4.4 (9.4)	5.5 (11.7)
Sound Pressure Level		H / M / L	dB(A)	46 / 44 / 40	49 / 47 / 43	49 / 47 / 43
Sound Power Level	Cooling	H / M / L	dB(A)	-	-	-
Piping Connections	Liquid		mm(inch)	Ø 9.52 (3/8)	Ø 9.52 (3/8)	Ø 9.52 (3/8)
	Gas		mm(inch)	Ø 15.88 (5/8)	Ø 15.88 (5/8)	Ø 15.88 (5/8)
	Drain (O.D. / I.D.)		mm	Ø 32.0 / 25.5	Ø 32.0 / 25.5	Ø 35.5 / 31.5
Safety Devices			-	Fuse	Fuse	Fuse
Power and Communication Cable (included Earth)			No. x mm ² (AWG)	4C x 0.75 (18)	4C x 0.75 (18)	4C x 0.75 (18)
Decoration Panel	Model Name		-	PT-UMC	PT-UMC	PT-UMC
	Casing Color		-	Morning Fog	Morning Fog	Morning Fog
	Dimensions	W x H x D	mm	22 x 950 x 950	22 x 950 x 950	22 x 950 x 950
		W x H x D	inch	7/8 x 37-13/32 x 37-13/32	7/8 x 37-13/32 x 37-13/32	7/8 x 37-13/32 x 37-13/32
	Net weight		kg (lbs)	5 (11.0)	5 (11.0)	5 (11.0)

Note:

1. All data are based on the following conditions:

- Cooling Temperature : Indoor 27°C(80.6°F) DB / 19°C(66.2°F) WB
Outdoor 35°C(95°F) DB / 24°C(75.2°F) WB
- Heating Temperature : Indoor 20°C(68°F) DB / 15°C(59°F) WB
Outdoor 7°C(44.6°F) DB / 6°C(42.8°F) WB
- Piping Length : Interconnected Pipe Length = 7.5m
- Difference Limit of Elevation (Outdoor ~ Indoor Unit) is Zero.

2. Wiring cable size must comply with the applicable local and national code.

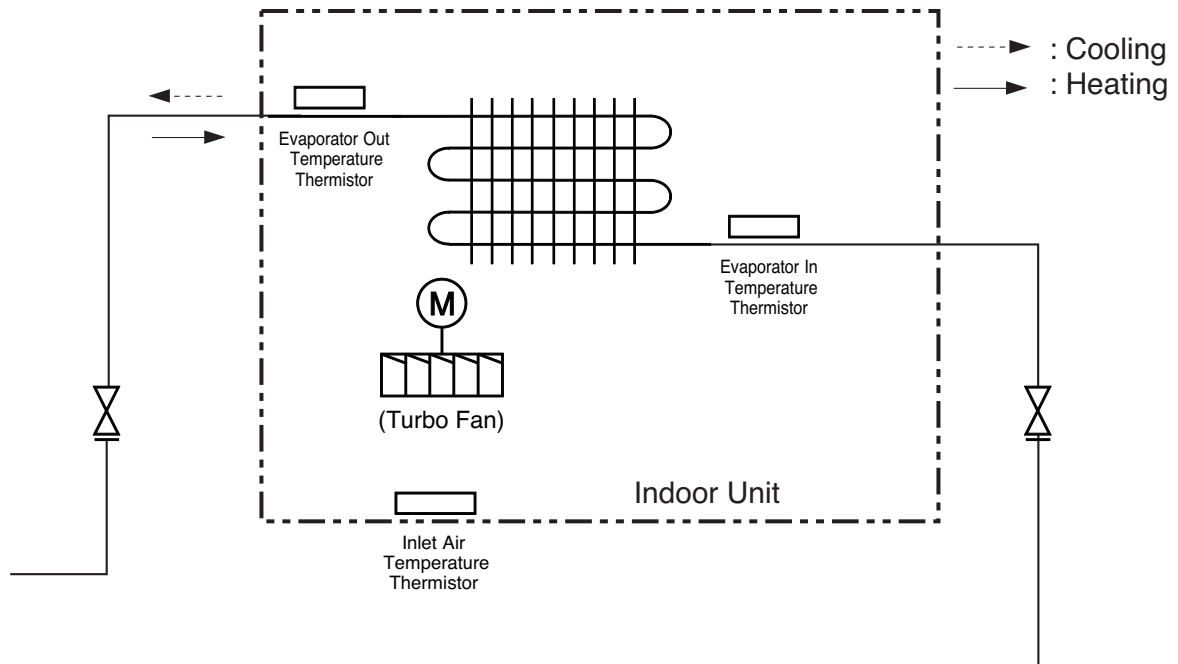
3. Due to our policy of innovation some specifications may be changed without notification.

4. Sound Level Values are measured at Anechoic chamber.

Therefore, these values can be increased(maximum 3dB(A)) owing to ambient conditions during operation.

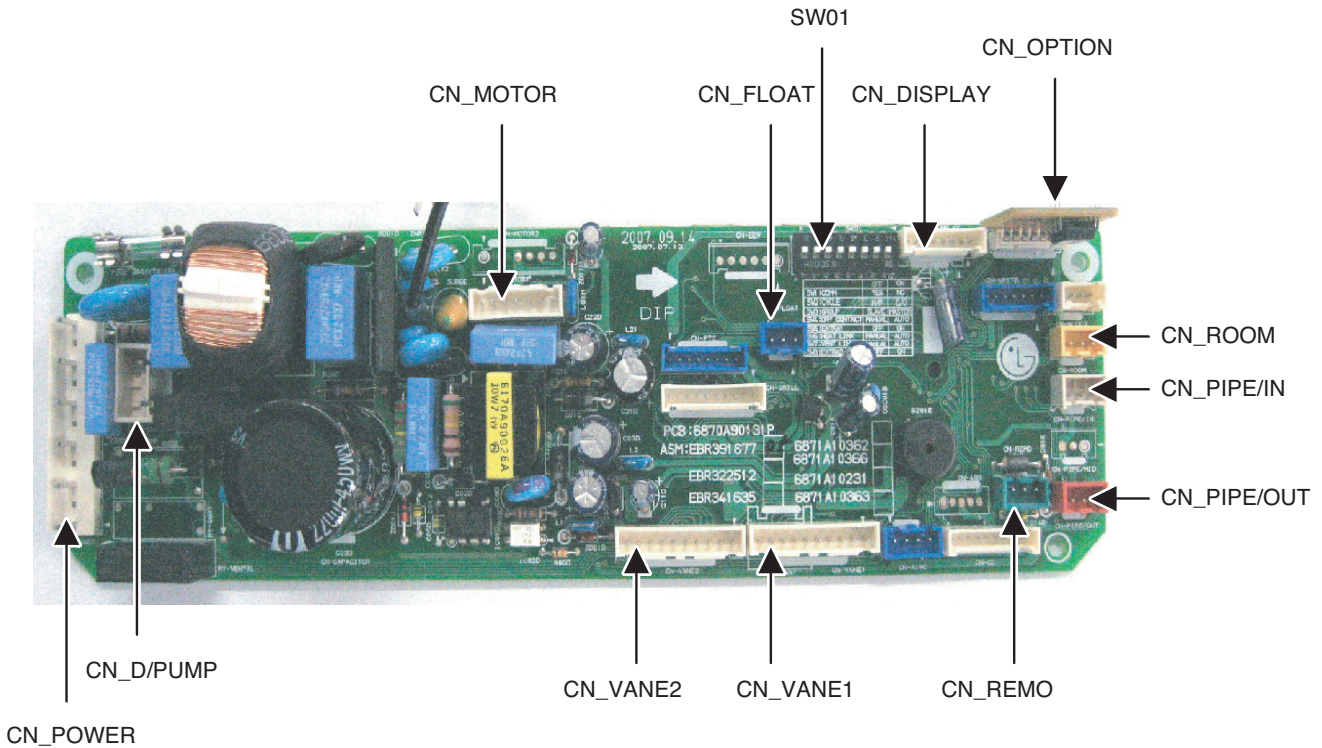
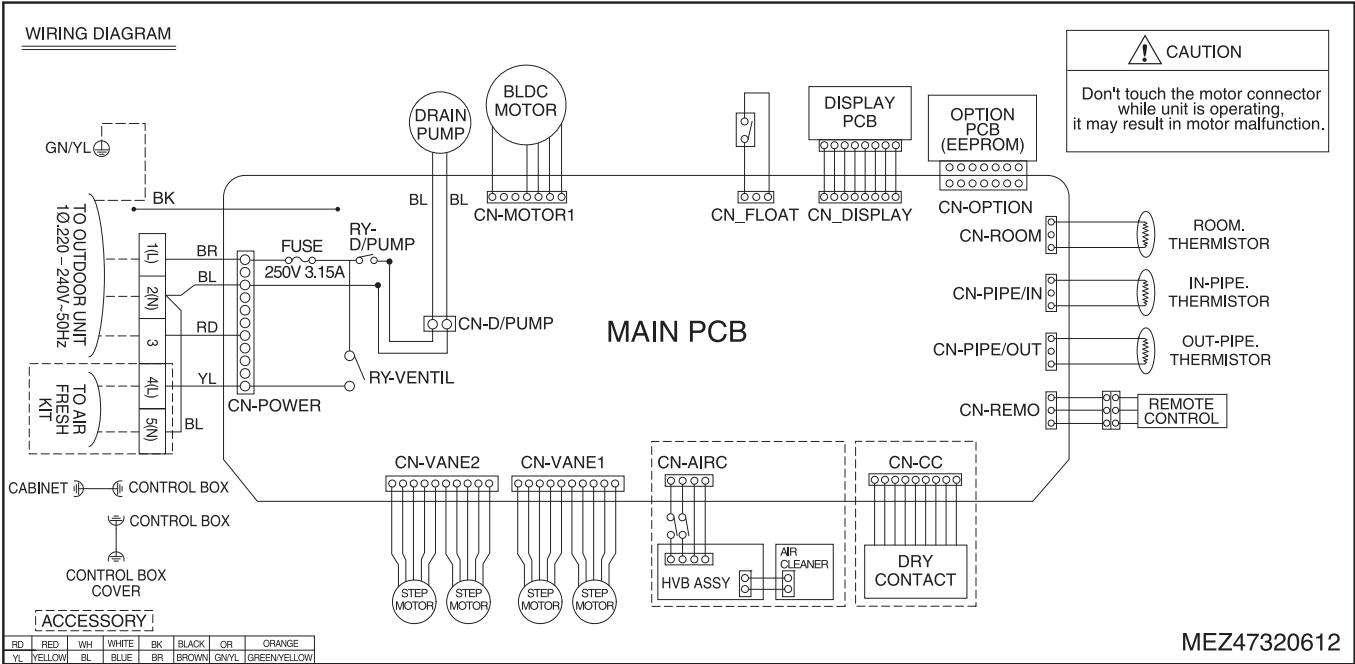
Conversion Formula
kW = Btu/h x 0.0002931
cfm = CMM x 35.3

2. Piping Diagrams



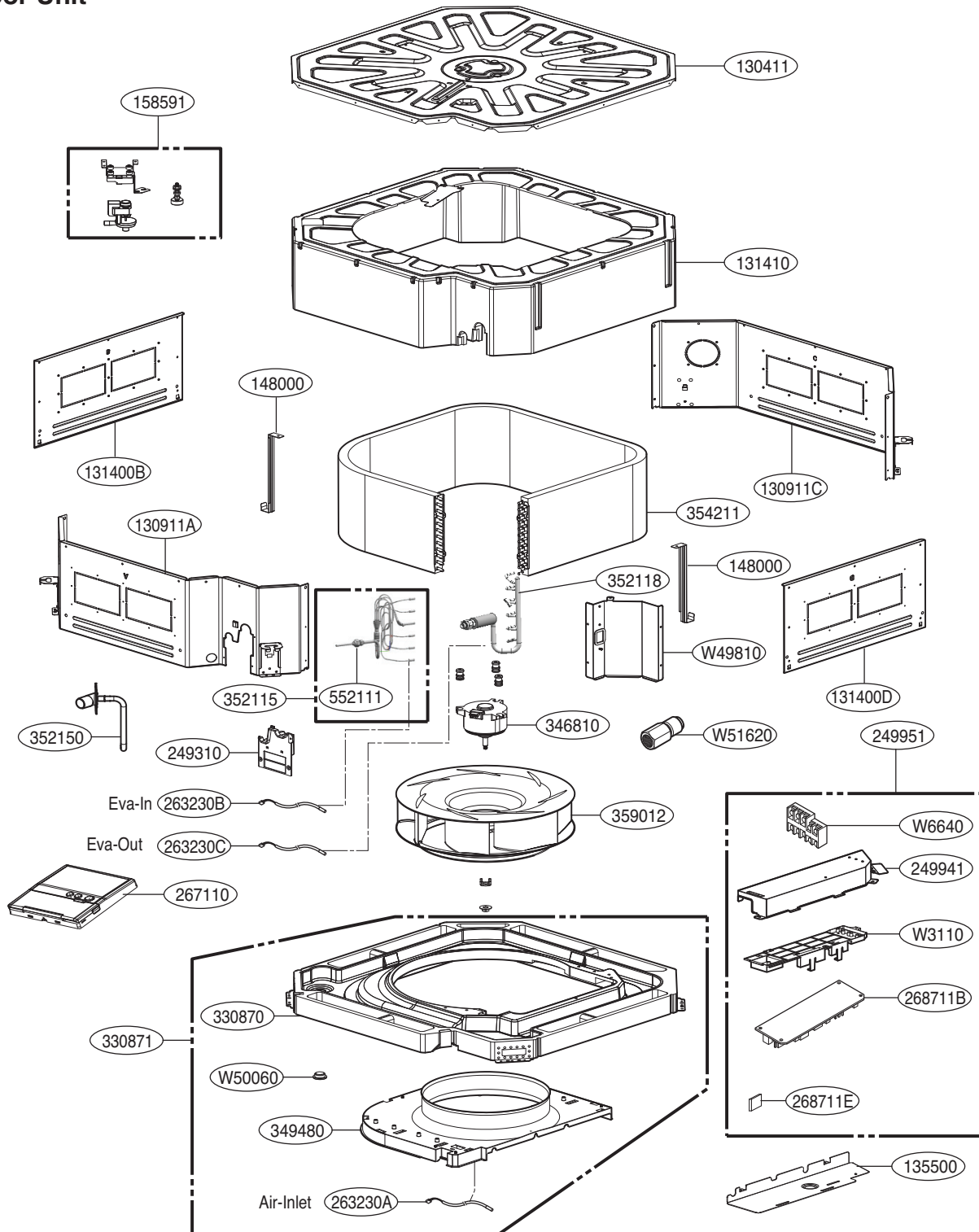
Description	PCB Connector
Inlet Air Temperature Thermistor	CN-ROOM
Evaporator In Temperature Thermistor	CN-PIPE/IN
Evaporator Out Temperature Thermistor	CN-PIPE/OUT

3. Wiring Diagrams



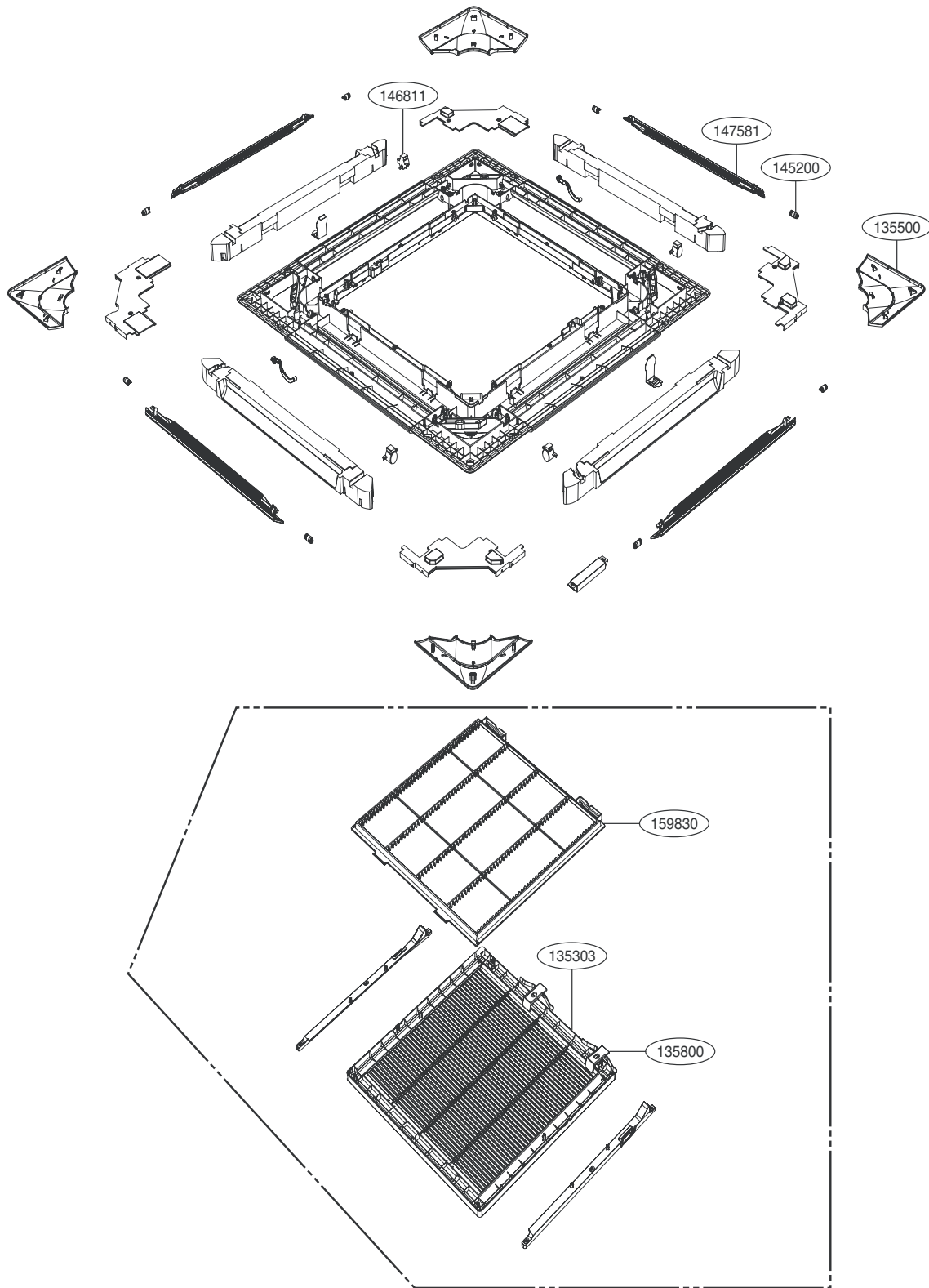
4. Exploded View

Indoor Unit



Location No.	Description	Sensor Information	Housing Color
263230A	Thermistor1(CN_ROOM)	Air-Inlet	Orange
263230B	Thermistor2(CN_PIPE/IN)	Eva-in	White
263230C	Thermistor3(CN_PIPE/OUT)	Eva-out	Red

Front Panel





P/NO : MFL67523102

November, 2014